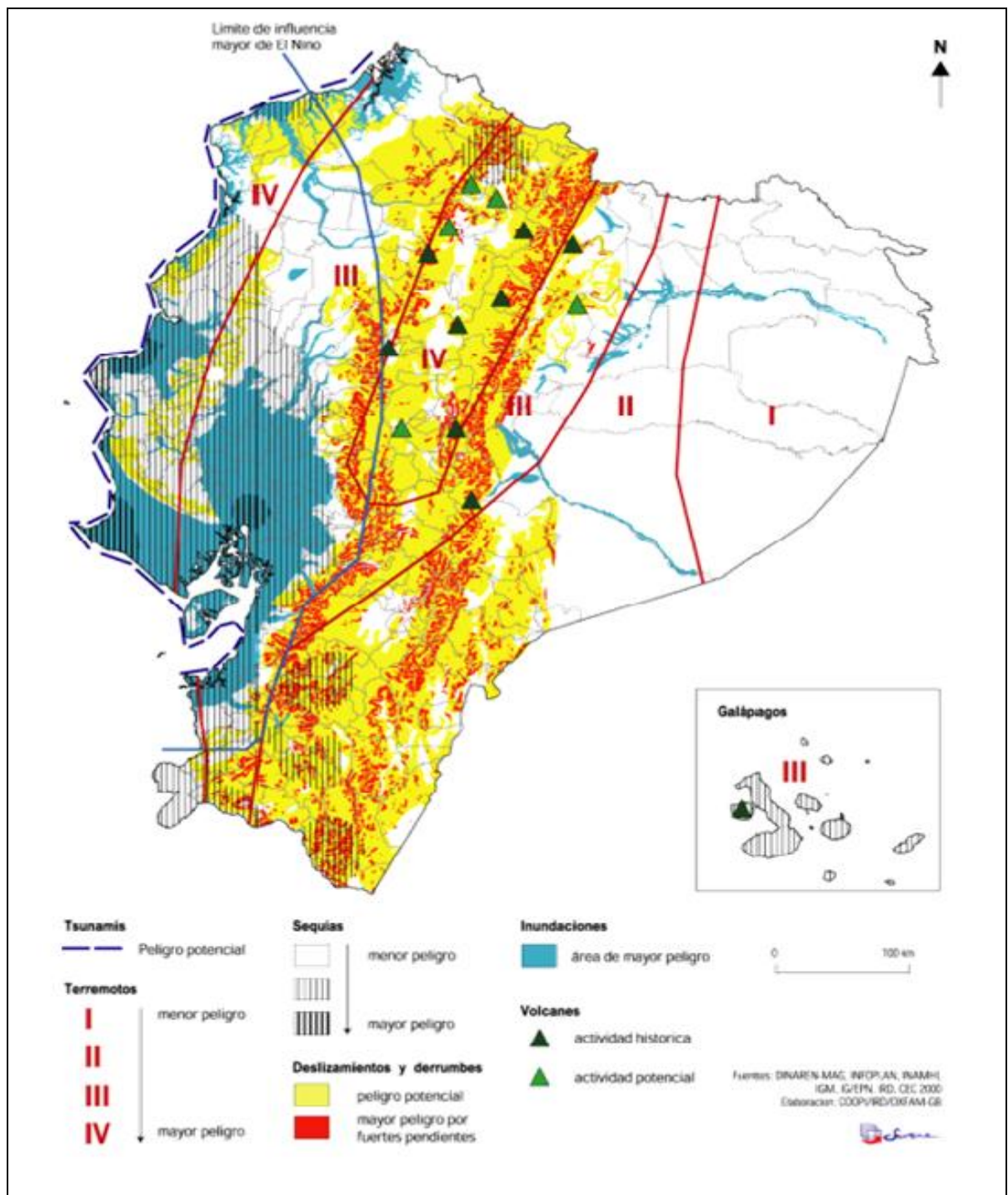
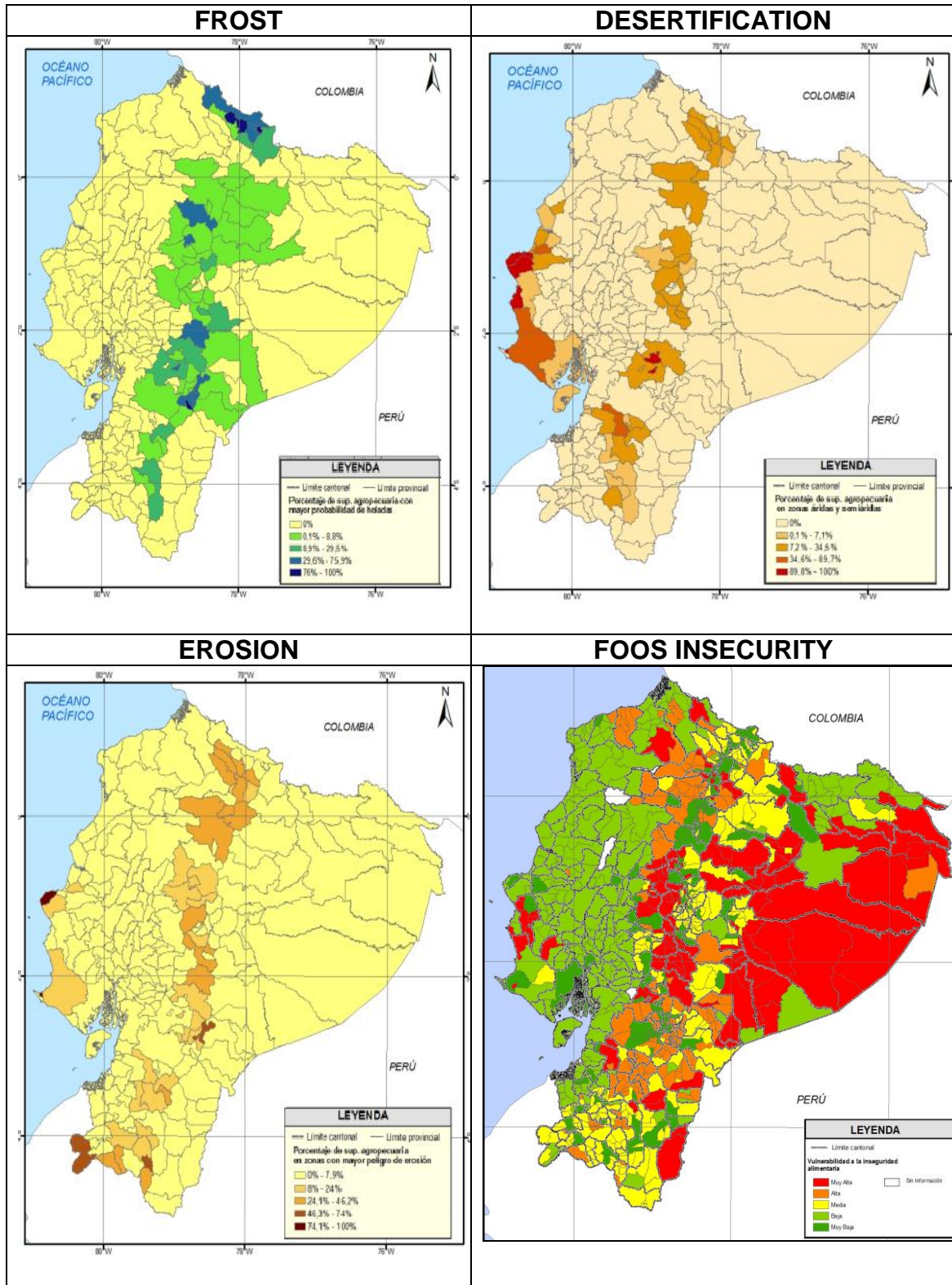


Annex Four: Multi-threats Map



Mapa Multi-Amenazas del Ecuador
Robert D'ercole et al 2003
 IRD / COOPI / OXFAM

Annex Five: VAM Ecuador: food insecurity, erosion, frost and desertification maps, source Ecuador Country Office WFP



Annex Six: Social Indicators

Social Indicators by Province								
Province	Canton	Parish	Population		Undernutrition	Consumption Poverty	Food	Climate
			#	% Rural Population			Vulnerability	Risk
Total País			12.156.608	39%	25,8	38,2		
Pichincha	Cayambe		2.388.817	28%	22,5	22,4		Climate change affects droughts in this sector, reduction of running ice (Cayambe).
		Olmedo	69.800	56%	34	23		
		Pesillo	6.439		41,5	32,03	Very high	
		Cangahua	13.508		46,5	42,6	High	
	Pedro Moncayo	Oton	2.125		42,1	36,33	Very high	
		Tabacundo	25.594	76%	31	26	Low	
		Tupigachi	11.699		31,8	17,23		
			5.120		38,5	38,52	Very high	
Azua	Nabon		599.546	47%	36,7	26,7		The central area is estimated long periods of drought, them that can last up to 16.78 months.Pucara, Santa Isabel, Giron, San Fernando- High risk of drought. Nabon, Oña and Pucara,- Landslide risk
		El Progreso	15.121	93%	64	32		
		Nabon	2.252		66,6	41,74	High	
	Oña	Cochapata	8.818		68,2	30,59	High	
		Oña	2.686	79%	54,4	31,5	High	
	Santa Isabel	Oña	3.231		49	0,27		
		Oña	3.231		51,6	27,7	High	
	Pucara	El Carmen	18.015	77%	47	16	Very high	
		Zhagili	1.239		49	29,3	Very high	
	Giron	Pucará	2.487	95%	61,9	22,9	Very high	
		Pucará	20.382		53	29		
	San Fernando	San Rafael	9.838		59,5	38,05	Very high	
		San Rafael	1.663		60,9	39,17	High	
		La Asunción	12.583	72%	46	12	High	
	San Fernando	2.885	65%	41	16	High		
	San Fernando	3.961		42,7	18,11	High		
Loja	Saraguro		404.835	55%	34,7	47,1		Jubones River Basin have shown extreme climate changes. Landslides.
			28.029	89%	62	42		
		San Sebastian	1.046		52,2	28,98	High	
		Manu	4.740		49,4	39,83	High	
		Lluzhupa	1.758		68,7	42,7	High	
		Selva Alegre	2.068		67	60,35	High	
		El Paraiso	2.315		70,5	59,22	High	
		San Pablo	3.502		67,5	49,03	Middle	
		Saraguro	7.346		62,2	25,3	Middle	
		Urdaneta	3.142		71,8	47,57	High	
		El Tablon	880		55,4	54,86	High	
		San Antonio	1.232		53	51,34	High	
		El Oro	Zaruma		525.763	24%	15,2	
Chilla			23.407	63%	23	13	Middle	
Pasaje			2.665	62%	19	16	Middle	
			62.959	28%	17	5	Middle	

1.- Population,- Censo de población y Vivienda INEC 2001

2.- Undernutrition - Encuesta de condiciones de vida (INEC) 2006/ Referencia WHO 2005 // VAM, WFP, 2009

3.- Consumption poverty- Encuesta de condiciones de vida (INEC) 2006 // VAM, WFP, 2009

3.- Vulnerability- VAM, WFP, 2009

4.- Climate Risk,- Vulnerability assessment Jubones River

Notes:Very High,- Regions that have a higher level of threat and a higher level of food vulnerability. / High,- Regions with a greater risk to climate impacts and vulnerability./

Middle,- Regions at risk of food vulnerability.

Source: SIISE 2010 // VAM, WFP, 2009